



1. Accessories:

1. Bag



2. Plastic clip



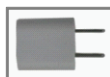
3. Sling



4. USB Cable



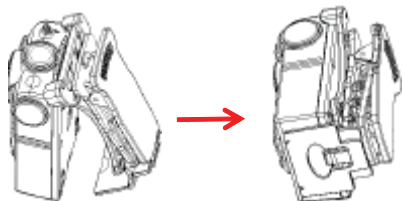
5. Adapter for AC



6. Velcro

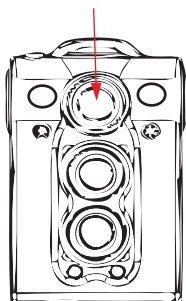


7. Magical clip

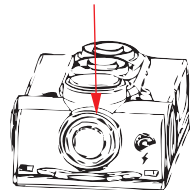


2. Len directions : two types

(A) Front Lens



(B) Top Lens



Standard Mode(without Wi-Fi)

(1) RECORDING AND TURN OFF

- Film mode : Press the "Top button" once, blue lights → about 4 to 5 secs it will be start (blue-light twinkling).
- Turn off : Video status (blue-light twinkling) or standby status (blue-light). Pressing the "Top button" about 2 secs and the blue-light will twinkle quickly 2 times → release the button and it will shut down (blue-light goes out).
- Standby mode : When blue-light shining, means the Standby mode. Body Cam will turn off automatically when there is no action after 60 secs.
- Camera mode : When it is Standby mode, press the "Bottom button" and it will take a photo (blue-light flashes once), then back to the Standby mode. Pressing the "Top button" back to Film mode.
- Screen Shot(Camera) : Under the Film mode press the "Bottom button", after screen shot it will back to filming.
- IR/LED light On : Press the "Bottom button" for 2 secs when Body Cam is recording (before connecting Wi-Fi) or Standby mode. → The IR/LED light will turn on; then Press the "Bottom button" for 2secs to turn off.

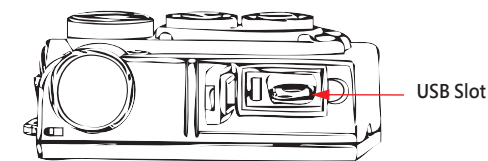
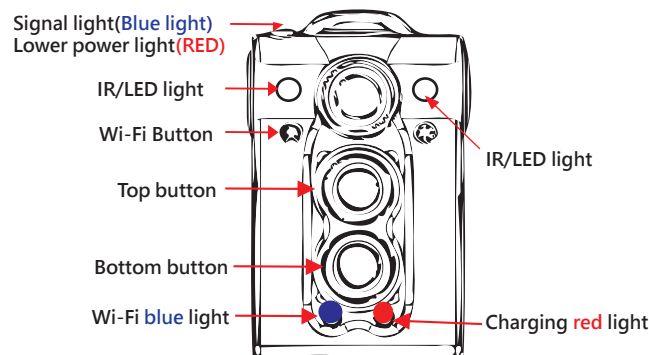
(2) CONNECTING WITH THE USB

- When connect to room electric (110V / 220V), car charger (12V) and power bank (5V) this status is charge while recording (red-light and blue-light twinkling). If you want to shut down power, remove the cable away.
- When connect to the computer or smartphone, it is for reading the information standby mode (blue light shining). If you want to remove from the computer or smartphone please follow the procedure of unload memory required.
- Charge mode: When Body Cam connect to the USB cable, which is connect to the room electric or computer. Using the "turn off" to stop video recording or data reading (blue light off, Charging red light on). The Charging red light will turn off automatically when Body Cam is fully charged.

(3) DATA READING

- Computer reads the data: Using USB cable to connect computer (red and blue light, or just blue light) → The screen will appear removable disk information, → Open the folder to view files, → Unmount hardware safely after reading.

*Note : (1). When read data from smartphone, hearing sound only but no video, need to press the "hardware decoding" and press the "software decoding" again.
 (2). Please using SD card formatter program (Reference the *CAUTIONS A), and we suggest that format it regularly.



CAUTIONS

- SD card repair program : www.haihao.com.tw/upc/sdcardformat2.html
- "Lens Fogging" is a common situation caused by difference of temperature. If it is happened and you should put the product to the dehumidifier or air condition. It will disappear. To avoid the fog please put the product to the Ventilating and drying area when the rainy day.
- Do not lack of the battery otherwise the time will be reset.

POWER CHECK

- When the battery is lowly (below 1.5 hr), lower power lights (RED) will twinkling per/min. If the power goes out, UPC-700W will close.
- It will display on the screen when connecting Wi-Fi on the Phone.

Wi-Fi Mode

(1.)FIRST TIME SETUP :

- Download App on your Smart Phone:
 - Android system "Google Play" search 「UPC-700W」 App ; Download & Install
 - iOS system "App Store" search 「Onepaa」 App Download & Install.
- Turn on the UPC-700W after the UPC-700W is recording (blue-light twinkling) pressing the Wi-Fi button .(the Wi-Fi blue light will twinkling after 2 seconds that is waiting for connection status and the device is pause mode.
- Turn on Wi-Fi function on your smart phone(setting),click network name: "UPC-700W" , keying the default code :12345678, Pairing is successful when the Wi-Fi light is always shining.
- Opening the 「Onepaa」 App, check "connect the camera", it will present "Real Time" live view.



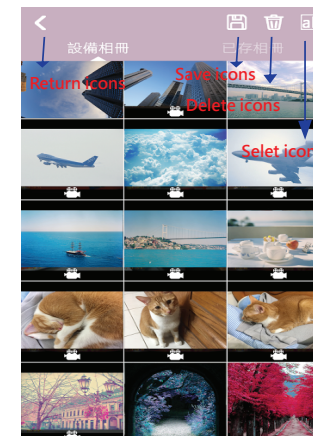
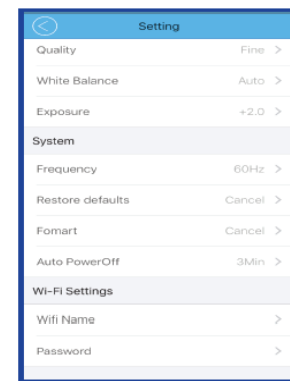
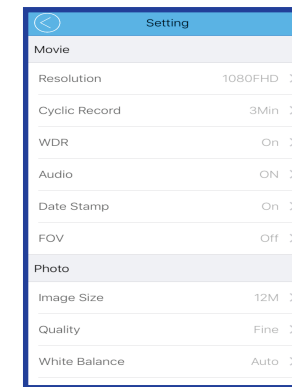
UPC-700W

(2.)ABOUT Wi-Fi MENU and SETTING :

- APP Home screen
The top left shows the Resolution. The top right shows the UPC-700W battery and connection situation. The directly below shows the 4 modes to transform,which bottom buttons : Album · Record · Setting(gear icon) ·
- Setting screen(gear icon)
 - MOVIE
Resolution: FHD 30fps, HD 60fps, HD 30fps, WVGA, VGA.
Cyclic Record: time length of file segments that a continuous video recording is divided into. Select Off or 3, 5 or 10 min utes. The default setting is 3 minutes.(suggest not closing)
WDR: Wide Dynamic Range. Select Off or On. The default setting is Off.
Audio: The default setting is On.
Date & Time: Open, it resets to the current date when the UPC-700W is connected WiFi to smart phone.
Rotate : Rotating the camera.
 - VIDEO TIME LAPSE
Video Time laps set : 1Sec. Please remain the default.
 - PHOTO
Image Size: size of photographs. Select from 12M, 10M, 8M, 5M, 3M, 2MHD, VGA or 1.3M.
White Balance: Auto/ Daylight /Cloudy/ Tungsten/ Fluorescent. Default is Auto.
Exposure: choose +2/3, +1/3, +0.0, -1/3, -2/3, -1.0, -4/3, -5/3, -2.0. Default Setting is +0.0.
 - SYSTEM
Frequency: frequency of household electricity. Choose 50Hz or 60Hz. Default is 60Hz.
Return menu setting to defaults: returns camera settings to default values.
Format: formats the memory card. We suggest using "SD Formatter" from SD Association by PC.
(CAUTION: All videos and photos including protected videos are deleted when you format the memory card.)(Reference the *CATIONS A)
Auto Power Off: amount of time before the camera automatically turns itself off. Camera does not automatically shut off when recording video or in Timing Video or Time Take Pictures modes.
Choose 3, 5 or 10 minutes, Off to shut off the camera manually or Off Now to turn off the camera now.
The default setting is 3 minutes.
 - Wi-Fi
WiFi Name: name of camera WiFi network.
Password: The default is 12345678. You should change the code.
(The password must be form by the numbers and at least 8 numbers.)

(3)BASIC OPERATION:

- Start Recording : Tap the Recording Button,then the Timestamp will start running (means recording now).Tap the Recording Button again to stop recording.
- Camera&Recording mode : Tap the second mode (Camera mode) and it will change.Tap the Recording Button to take a photo. Tap the first mode(Recording mode) to back to the Recording.
- Self timer : Now It's not working
- IR/LED lights : Now It's not working . Opening it on Standard Mode.
- Viewing the Photos : Tap the icon on the bottom left(albums),then enter the albums.On the screen there has Device photo and Phone photo can change.Tap the top left button to return the Recording mode.
- Download/Delete the Videos/Photos : Selecting the files which you want and tap the button of bottom left. After download completely, you can watch the video at Phone photo . You can delete the Videos/Photos at the button of bottom right.
PS : It can't be operate at UPC-700W under the Wi-Fi mode.Only the Top Button to shut down.
Please operate it on the phone.



Two Years Limited Warranty

Made in Taiwan

